



CRSP34 Polyclonal Antibody

| | |
|---------------------------|--|
| Catalog No | YP-Ab-01626 |
| Isotype | IgG |
| Reactivity | Human;Mouse |
| Applications | WB;ELISA |
| Gene Name | MED27 |
| Protein Name | Mediator of RNA polymerase II transcription subunit 27 |
| Immunogen | Synthesized peptide derived from CRSP34 . at AA range: 90-170 |
| Specificity | CRSP34 Polyclonal Antibody detects endogenous levels of CRSP34 protein. |
| Formulation | Liquid in PBS containing 50% glycerol, 0.5% BSA and 0.02% sodium azide. |
| Source | Polyclonal, Rabbit,IgG |
| Purification | The antibody was affinity-purified from rabbit antiserum by affinity-chromatography using epitope-specific immunogen. |
| Dilution | Western Blot: 1/500 - 1/2000. ELISA: 1/10000. Not yet tested in other applications. |
| Concentration | 1 mg/ml |
| Purity | ≥90% |
| Storage Stability | -20°C/1 year |
| Synonyms | MED27; CRSP34; CRSP8; Mediator of RNA polymerase II transcription subunit 27; Cofactor required for Sp1 transcriptional activation subunit 8; CRSP complex subunit 8; Mediator complex subunit 27; P37 TRAP/SMCC/PC2 subunit; Transcriptional co |
| Observed Band | 35kD |
| Cell Pathway | Nucleus . |
| Tissue Specificity | Lung,Skin, |
| Function | function:Component of the Mediator complex, a coactivator involved in the regulated transcription of nearly all RNA polymerase II-dependent genes. Mediator functions as a bridge to convey information from gene-specific regulatory proteins to the basal RNA polymerase II transcription machinery. Mediator is recruited to promoters by direct interactions with regulatory proteins and serves as a scaffold for the assembly of a functional preinitiation complex with RNA polymerase II and the general transcription factors.,sequence caution:Translated as Gln.,sequence caution:Translation N-terminally shortened.,similarity:Belongs to the Mediator complex subunit 27 family.,subunit:Component of the Mediator complex, which is composed of MED1, MED4, MED6, MED7, MED8, MED9, MED10, MED11, MED12, MED13, MED13L, MED14, MED15, MED16, MED17, MED18, MED19, MED20, MED21, |



MED22, MED23, MED24, MED25, MED26, ME

Background

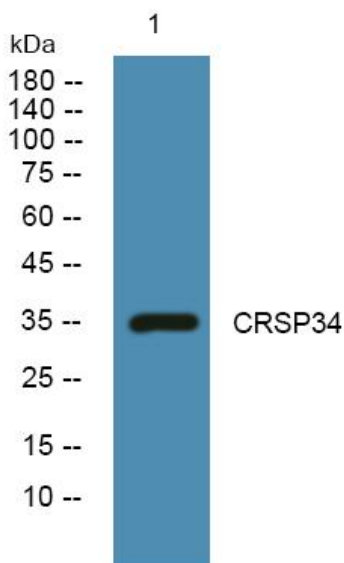
The activation of gene transcription is a multistep process that is triggered by factors that recognize transcriptional enhancer sites in DNA. These factors work with co-activators to direct transcriptional initiation by the RNA polymerase II apparatus. The protein encoded by this gene is a subunit of the CRSP (cofactor required for SP1 activation) complex, which, along with TFIID, is required for efficient activation by SP1. This protein is also a component of other multisubunit complexes e.g. thyroid hormone receptor-(TR-) associated proteins which interact with TR and facilitate TR function on DNA templates in conjunction with initiation factors and cofactors. Alternatively spliced transcript variants encoding multiple isoforms have been observed for this gene, and a pseudogene of this gene is located on the long arm of chromosome 5. [provided by RefSeq, Dec 2011],

matters needing attention

Avoid repeated freezing and thawing!

Usage suggestions

This product can be used in immunological reaction related experiments. For more information, please consult technical personnel.

Products Images

Western blot analysis of lysates from K562 cells, primary antibody was diluted at 1:1000, 4° over night